



**Application:**

- Heavy Duty Machinery
- Wheel Drives
- Material Handling
- Mining
- Agriculture
- Conveyors
- Door Openers and Swing Drives etc.

MLB Series brake is a wet disc hydraulic brake. The hydraulic disk brake is spring to apply the brake, and hydraulic pressure is required to release the brake.

**Features:**

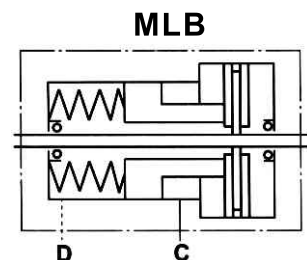
- MLB series adapt the advance friction disc and spring design: long life, low noise, high reliability.
- 4 Drainage tap, can use in different situation.
- Small volume, easy assembly.
- For flange attachment to MAP(H), MAR(S), MAS(E) series hydraulic motors.

In order to make the MLB series brakes working in optimal situation, we recommend the following:

<b>Assembly</b>	For fill oil after hydraulic motor assembly.
<b>Fluid type</b>	Mineral based-HM(GB/T763.2-87) (ISO6743/4) or HLP(DIN51524).
<b>Temperature range</b>	Normal -20℃ ~ 90℃ ; the best optimal situation 20℃ ~ 60℃
<b>Viscosity range</b>	20~75 mm <sup>2</sup> /s ; the best optimal situation 42~74mm <sup>2</sup> /s at 40℃
<b>Filtration</b>	Normal filtration of 25 micron, ISO code 20/16
<b>Maintenance</b>	Changed after the first 50~100h; then after every 500~1000h.

**Specification**

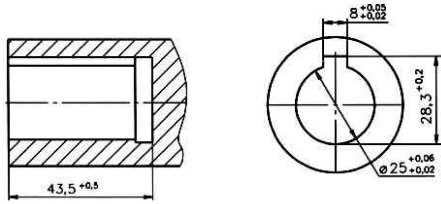
Description MLB	21	32	43
* Min. Static Torque [daNm]	20-22	31-34	41-45
Opening Pressure [bar]	min	17 - 23	
	max	300	
Min. Oil Quantity for Brake Releasing [cm <sup>3</sup> ]	7 - 8		
Oil Volume [cm <sup>3</sup> ]	50 - 120		
Max. Pressure in Drain Space [bar]	0 , 5		
Weight [Kg]	9		



**Input Shaft Holes**

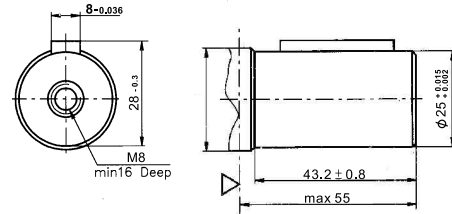
**Output Shaft Extensions**

**C**

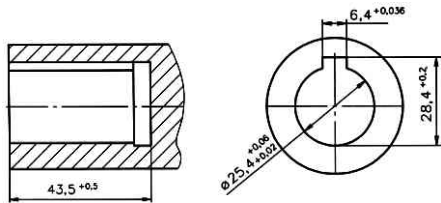


**C**

∅ 25 Straight, Parallel key A8 x 7 x 32  
Max. Torque 34 daNm

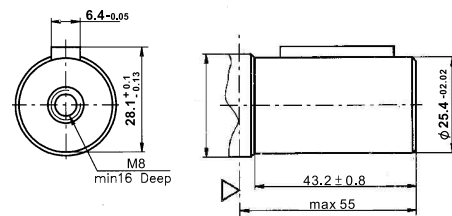


**CO**

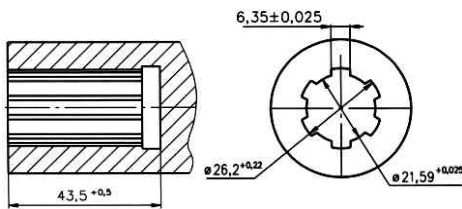


**CO**

∅ 1" Straight, Parallel key 1/4" x 1/4" x 1/4" Bs46  
Max. Torque 34 daNm

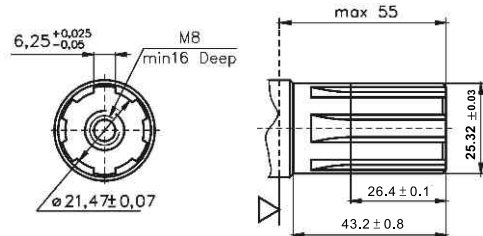


**S**

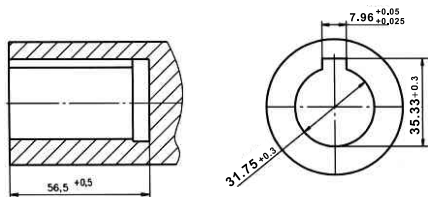


**S**

Splined BS2059 (SAE 6B)  
Max. Torque 40 daNm

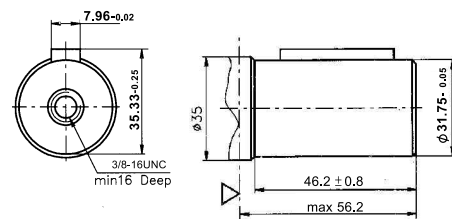


**C1**

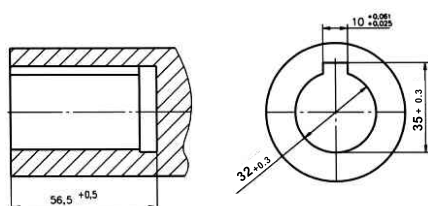


**C1**

∅ 1 1/4" Straight, Parallel key 5/16" x 5/16" x 1 1/4"  
Max. Torque 77 daNm

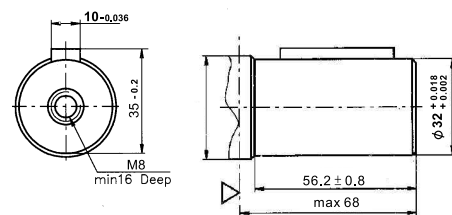


**C2**

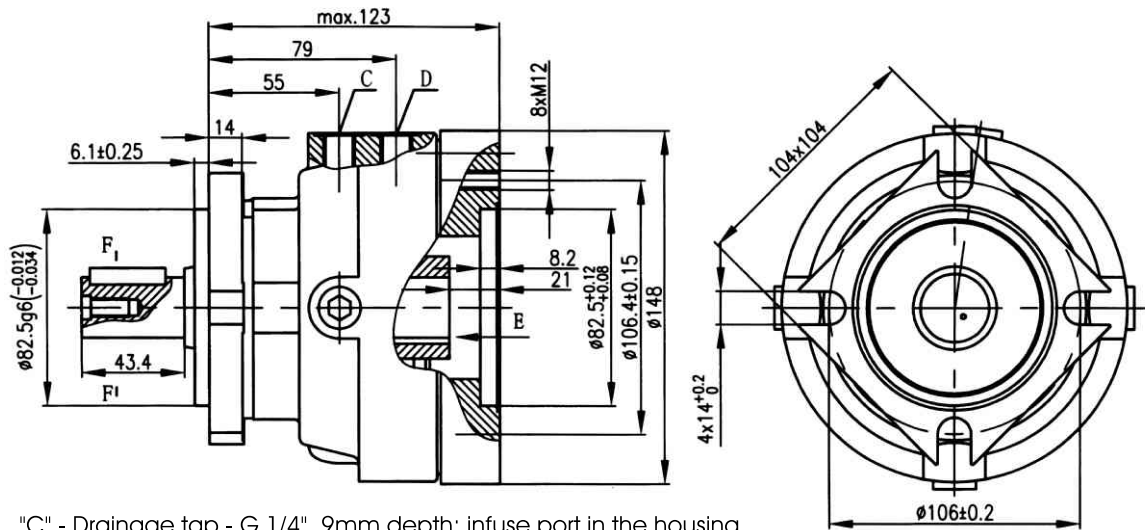


**C2**

∅ 32 Straight, Parallel key A10 x 8 x 45  
Max. Torque 77 daNm

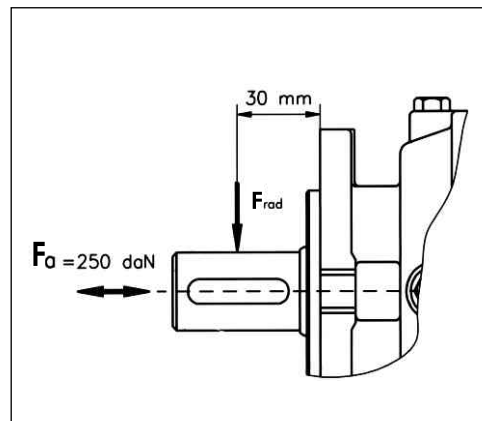
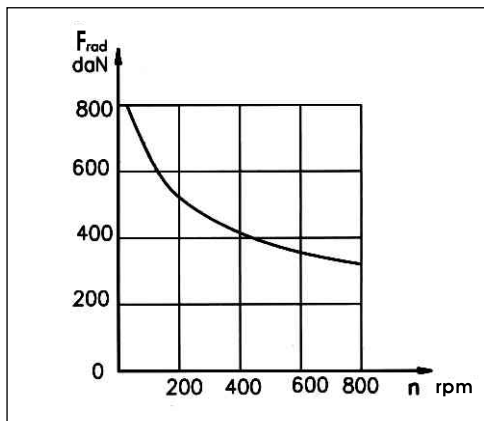


Dimensions and Mounting Data for MLB



"C" - Drainage tap - G 1/4", 9mm depth; infuse port in the housing.

"D" - Brake release port - G 1/4" 9mm depth.



Ordering Information for MLB

MLB	1	2	3	4	5
	-				

**Pos.1 Input Shaft Holes**

C, CO, S, C1, C2

**Pos.2 Static Torque Code (See Specification Data)**

21, 32, 43

**Pos.3 Output Shaft Extensions**

- C** -  $\phi$  25 Parallel key A8 x 7 x 32
- CO** -  $\phi$  1" Straight, Parallel Key 1/4" X 1/4" X 1 1/4"
- S** -  $\phi$  25, 32 Splined(SAE 6B)
- C1** -  $\phi$  1 1/4" Straight Parallel Key 5/16" x 5/16" x 1 1/4"
- C2** -  $\phi$  32 Straight Parallel Key A10 x 8 x 45

**Pos.4 Option (Paint)\***

Omit - Grey

**B** - Black

**00** - No Painting

**Pos.5 Painting**

Omit - Factory Specified