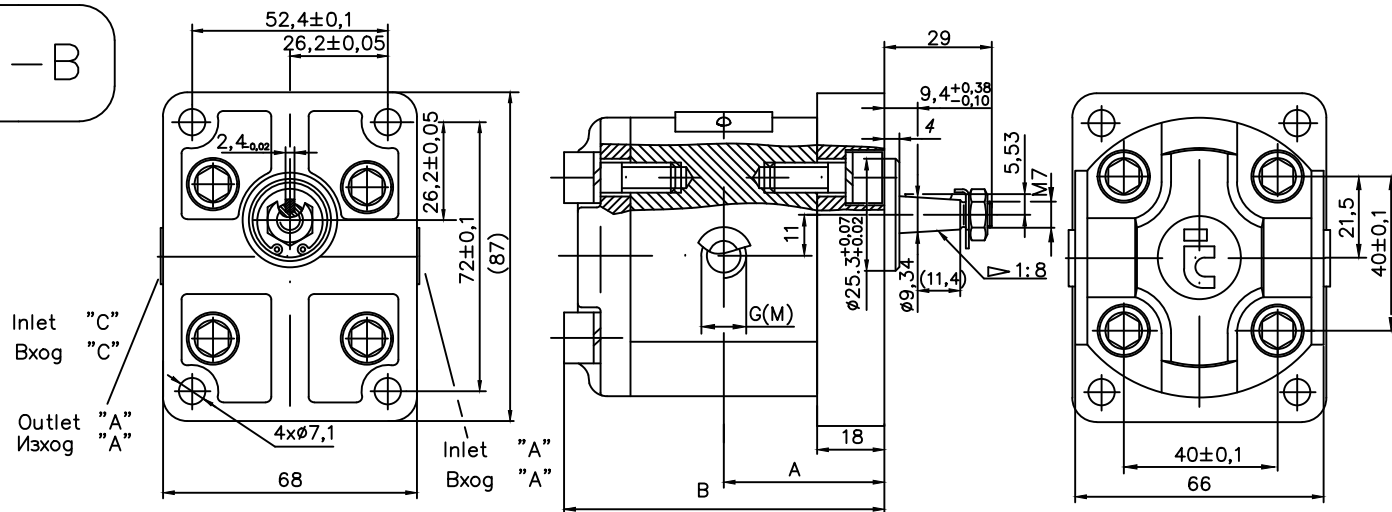


A(C)...X1T1-B



Type Tun	Displacement Работен обем	Dimensions Размери						Technical data Технически данни	
		A	B	Inlet Bxog		Outlet Изход		Rated pressure Ном. налягане	Speed Скорост
				G	M	G	M		
cm ³	mm	inch	mm	inch	mm	bar	min ⁻¹		
A(C)1.25X1T1-B	1.25	39,9	83	G3/8"		G3/8"		250	700...3500
A(C)1.6X1T1-B	1.6	40.3	84	G3/8"		G3/8"		250	700...3500
A(C)1.8X1T1-B	1.8	40.7	84.7	G3/8"		G3/8"		250	700...3500
A(C)2X1T1-B	2	41,1	85,5	G3/8"		G3/8"		250	700...3500
A(C)2.5X1T1-B	2.5	42.1	87.5	G3/8"		G3/8"		250	700...3500
A(C)3.15X1T1-B	3.15	43,4	90.4	G1/2"		G3/8"		250	700...3500
A(C)3.65X1T1-B	3.65	44.4	92.4	G1/2"		G3/8"		250	700...3500
A(C)4.2X1T1-B	4.2	45.5	94.5	G1/2"		G3/8"		250	700...3000
A(C)5.1X1T1-B	5.1	47,1	97.5	G1/2"		G3/8"		250	700...3000
A(C)5.7X1T1-B	5.7	48.5	100.5	G1/2"		G3/8"		200	700...2500
A(C)6.1X1T1-B	6.1	49.4	102.2	G1/2"		G3/8"		200	700...2500
A(C)7X1T1-B	7	51.2	106	G1/2"		G3/8"		180	700...2000
A(C)7.9X1T1-B	7.9	52.6	109	G1/2"		G3/8"		170	700...2000