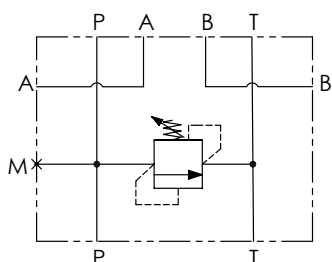




SCHEMA IDRAULICO / HYDRAULIC CIRCUIT



CODICE ORDINAZIONE / ORDERING CODE

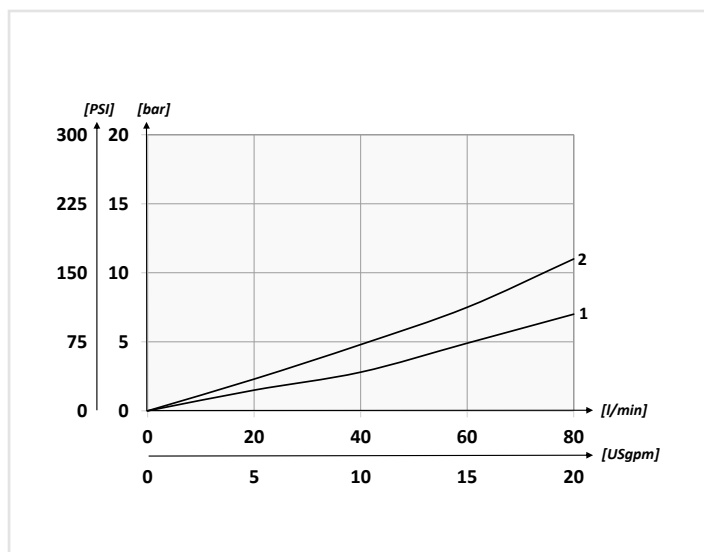
01	02	03
BS5		

01	BASI SINGOLE CETOP5 IN ALLUMINIO (ALUMINIUM CETOP5 SINGLE MANIFOLDS)	BS5
02	REGOLAZIONE (SETTING)	Chiave (Screw) C
		Volantino (Handknob) Tipo (Type) V 81300023
03	MOLLA (SPRING) 10/100 bar (145/1450 PSI)	23 bar/al giro (334 PSI/turn) 1
	MOLLA (SPRING) 20/210 bar (290/3045 PSI)	40 bar/al giro (580 PSI/turn) 2

DATI TECNICI / TECHNICAL DATA

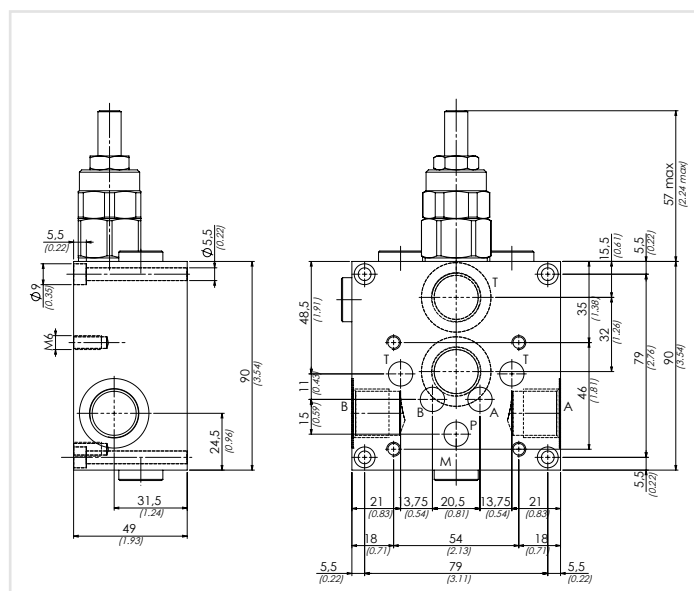
Olivo idraulico - Mineral oil	ISO 6743/4 (DIN 51524)
Viscosità olio - Oil viscosity	15-250 mm²/s (15 to 250 cSt)
Classe di contaminazione max con filtro Max contamination index with filter	ISO 4406:1999 Classe 19/17/14
Temperatura dell'olio - Oil temperature	-20°C +80°C -4°F +176°F
Temperatura ambiente - Environment temperature	-20°C +50°C -4°F +122°F
È indispensabile l'utilizzo di un filtro per proteggere la valvola (filtrazione consigliata 15 µm) It is necessary a filter use to protect the valve (advised filtration 15 µm)	

PERFORMANCES



CARATTERISTICHE TECNICHE / TECHNICAL CHARACTERISTICS

TIPO / TYPE	PORTATA MAX / MAX FLOW l/min-USgpm	PRESSIONE MAX / MAX PRESSURE bar-PSI	PESO APPROX / APPROX WEIGHT kg-lbt	TIPO DI VALVOLA / TYPE OF VALVE
BS5	80 (21.1)	210 (3045)	1,20 (2.64)	VMD90



[mm]
[Inches]

ATTACCHI / PRESSURE DROPS

P-T-A-B	BSPP 1/2
M	BSPP 1/4
<p>Il blocco in alluminio anodizzato nero può essere utilizzato per pressioni fino a 210 bar (3045 PSI)</p> <p>Aluminium manifold black anodized can be suitable for pressures up to 210 bar (3045 PSI)</p>	