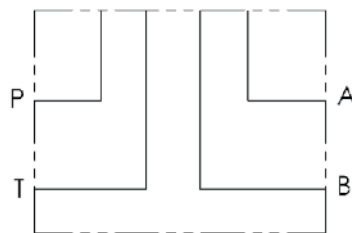
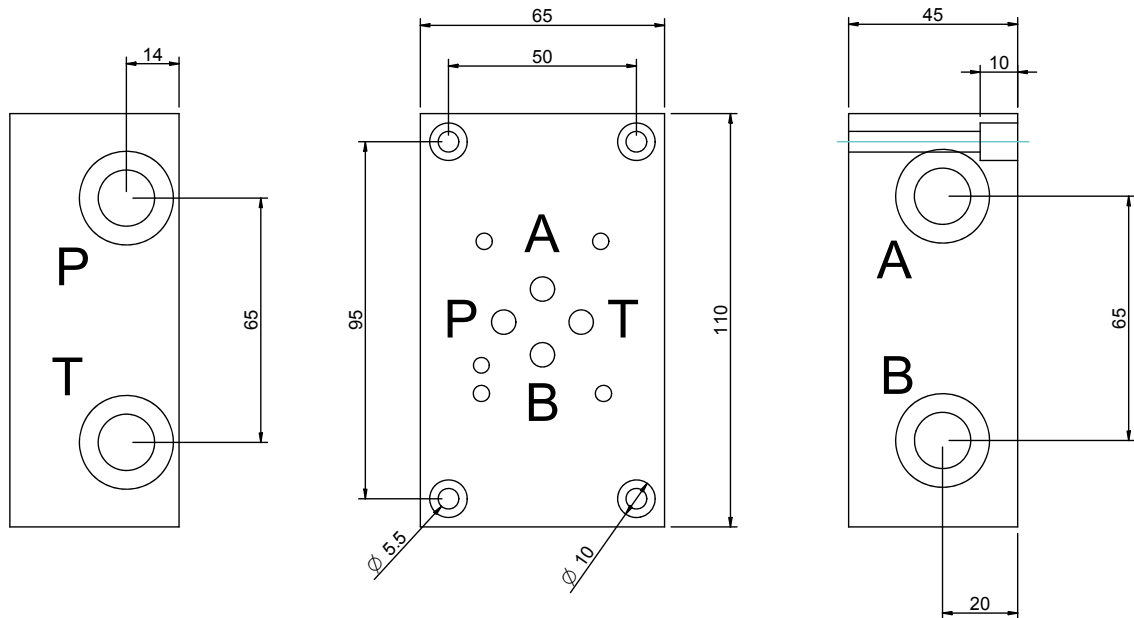


CETOP 3 - NG 06

BASE CON COLLEGAMENTO P - T - A - B LATERALI LATO OPPOSTO
 SINGLE SUBPLATE WITH REAR ON OPPOSITE SIDE P - T - A - B PORTS



Versione standard in alluminio
 Standard type with aluminium

Pressione massima di lavoro = 250 bar
 Max working pressure = 250 bar

Esempio codice di ordinazione - Ordering example

BSA 06 # LL

Base in alluminio
 Aluminium subplate

CETOP 3 - NG 06

A = (P - T - A - B) G1/4

B = (P - T - A - B) G3/8

(P - T - A - B) laterali lato opposto
 On side (P - T - A - B)