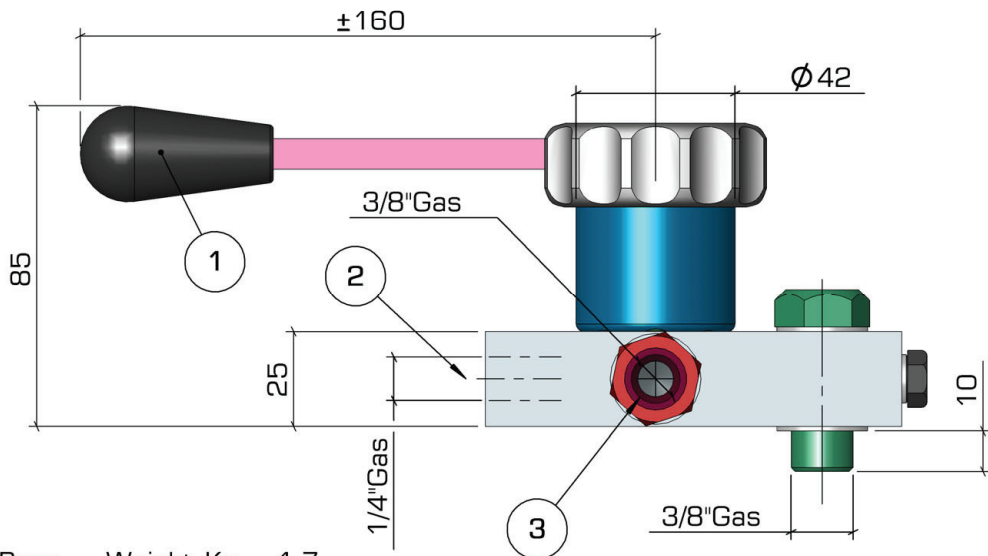


Gruppo Rubinetto GL4VN 4 Way diverter GL4VN

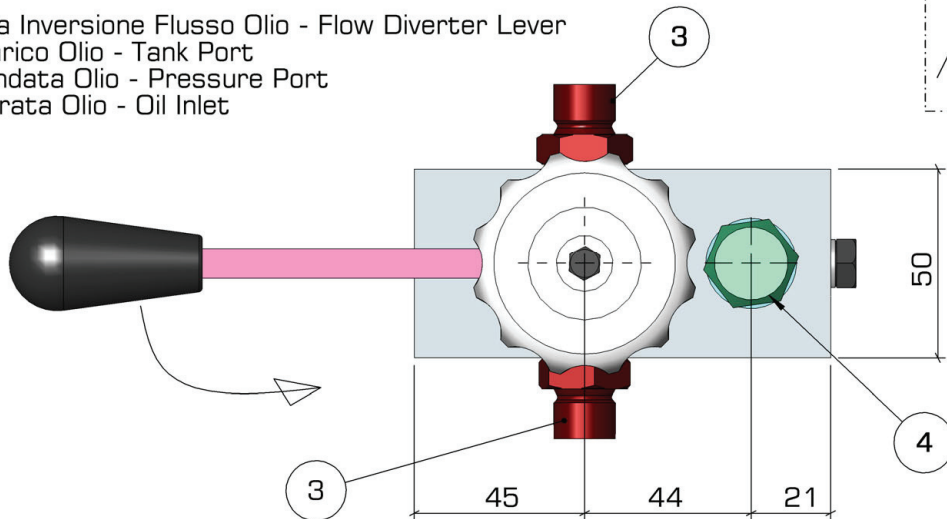
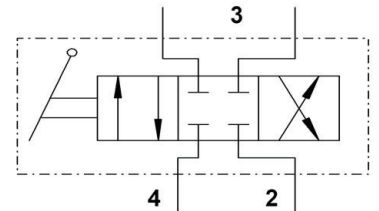


Montaggio - Mounting:

Qualunque posizione.
Any Position.

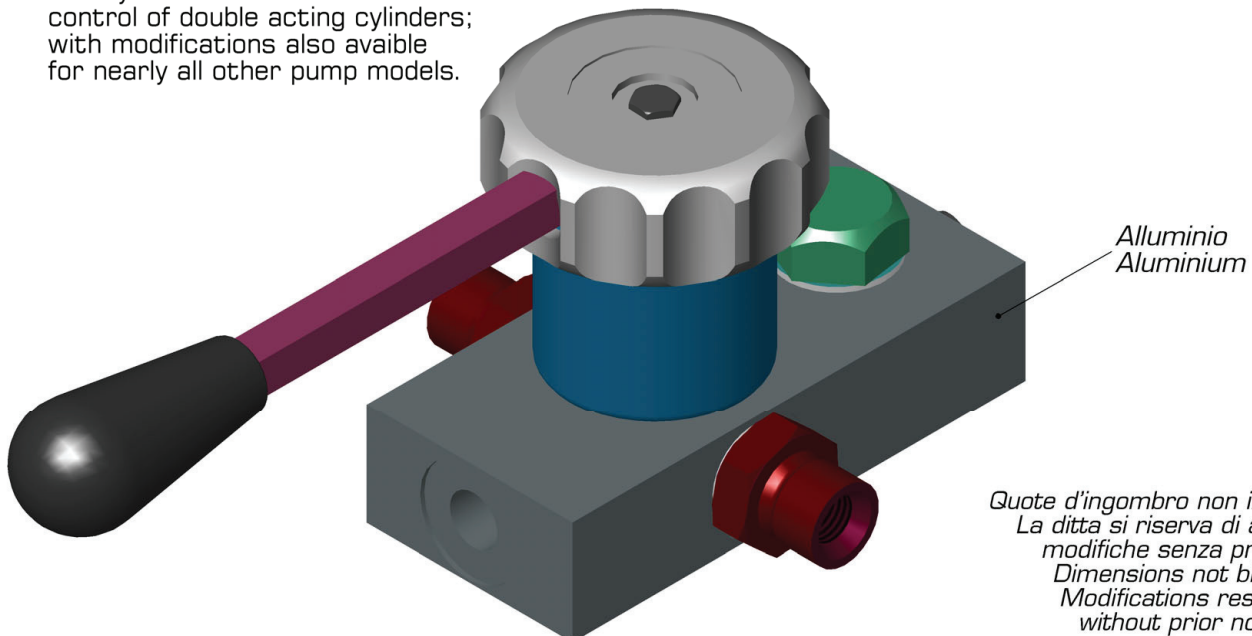
Peso - Weight Kg. ~1,7

- 1 Leva Inversione Flusso Olio - Flow Diverter Lever
- 2 Scarico Olio - Tank Port
- 3 Mandata Olio - Pressure Port
- 4 Entrata Olio - Oil Inlet



Per comando cilindri a doppio effetto, applicabile ,con opportune modifiche a quasi tutti i tipo di pompe.

4-Way-diverter valve for the control of double acting cylinders; with modifications also available for nearly all other pump models.



Quote d'ingombro non impegnative.
La ditta si riserva di apportare
modifiche senza preavviso.
Dimensions not binding.
Modifications reserved
without prior notice.