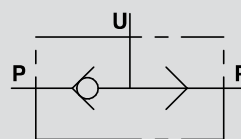


VALVOLE COMMUTATRICI SHUTTLE VALVES

TIPO / TYPE

VU2P

SCHEMA IDRAULICO
HYDRAULIC DIAGRAM



IMPIEGO:

Valvola utilizzata per selezionare, tra due segnali indipendenti di pressione, quello con valore maggiore ed escludere l'altro.

USE AND OPERATION:

This valve is used to select higher pressure between two pressure lines.

MATERIALI E CARATTERISTICHE:

Corpo: acciaio zincato.
Guarnizioni: BUNA N standard.
Tenuta: a sfera.

MATERIALS AND FEATURES:

Body: zinc-plated steel.
Seal: BUNA N standard.
Load holding: ball type

MONTAGGIO:

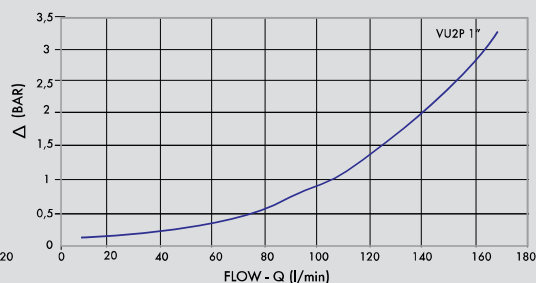
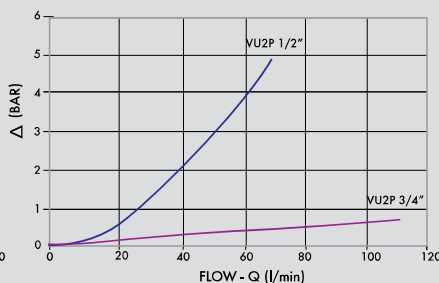
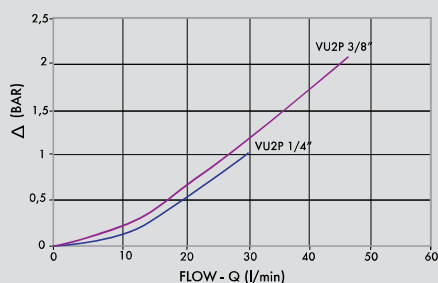
Collegare P alle linee da selezionare e U alla linea da alimentare.

CONNECTIONS:

Connect ports P to the 2 lines to select and U to the line to feed .

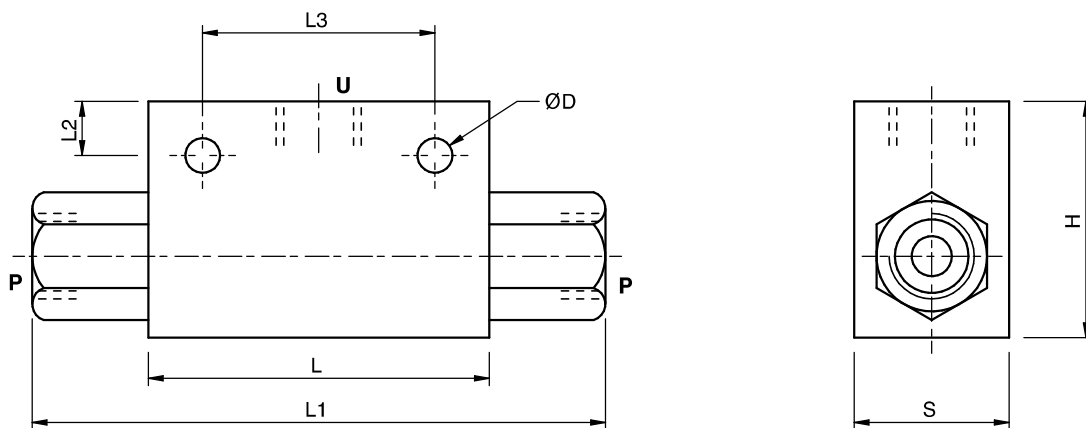
PERDITE DI CARICO PRESSURE DROPS CURVE

Temperatura olio: 50°C - Viscosità olio: 30 cSt
Oil temperature: 50° C - Oil viscosity: 30 cSt





CODICE CODE	SIGLA TYPE	PORTATA MAX MAX FLOW Lt. / min	PRESSIONE MAX MAX PRESSURE Bar
V0666	VU2P 1/4"	30	350
V0668	VU2P 3/8"	45	350
V0670	VU2P 1/2"	70	350
V0680	VU2P 3/4"	110	350
V0685	VU2P 1"	150	300



CODICE CODE	SIGLA TYPE	U - P GAS	L mm	L1 mm	L2 mm	L3 mm	H mm	S mm	ØD mm	PESO WEIGHT kg
V0666	VU2P 1/4"	G1/4"	60	104	9	44	40	30	8,5	0,560
V0668	VU2P 3/8"	G3/8"	60	104	9	44	40	30	8,5	0,530
V0670	VU2P 1/2"	G1/2"	60	104	12	44	50	30	8,5	0,652
V0680	VU2P 3/4"	G3/4"	80	127	12	44	58	35	8,5	1,086
V0685	VU2P 1"	G1"	80	126	11	60	80	50	10,5	2,172