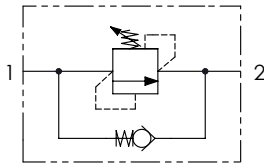


SCHEMA IDRAULICO / HYDRAULIC CIRCUIT

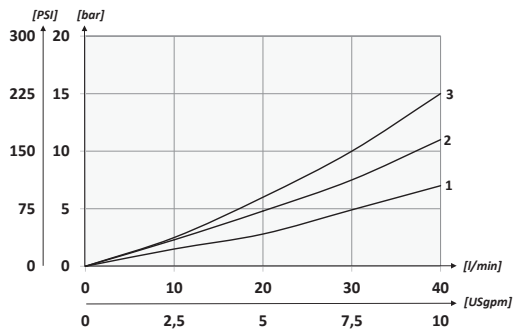


CODICE ORDINAZIONE ORDERING CODE

01	02	03
VSL		

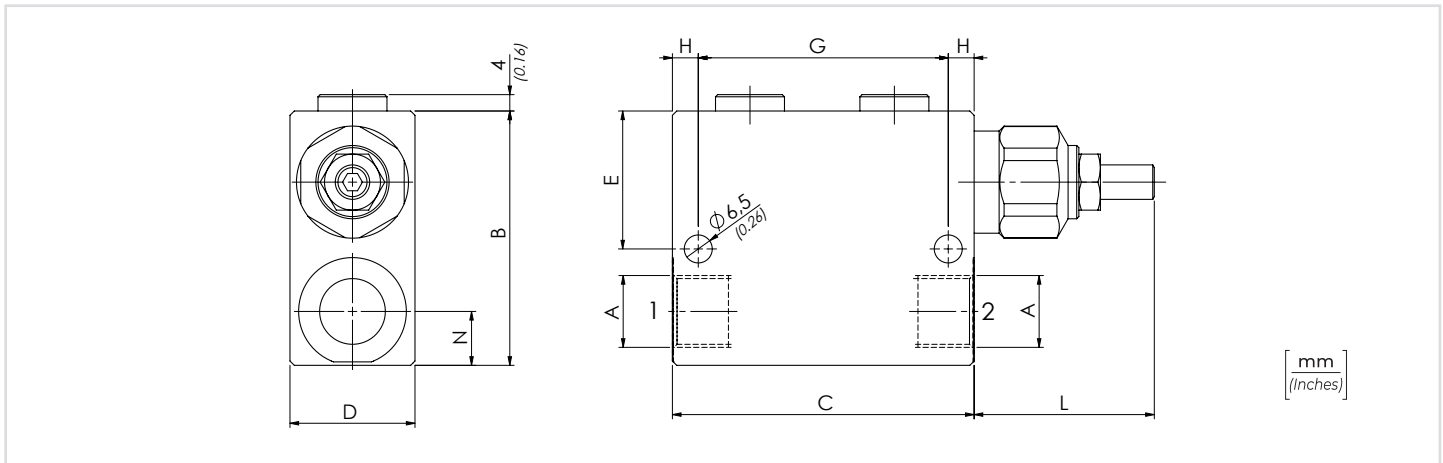
01	VALVOLE DI SEQUENZA DIRETTE (IN-LINE DIRECT SEQUENCE VALVES)		VSL
02	DIMENSIONE (SIZE)	BSPP 1/4	140
		BSPP 3/8	380
		BSPP 1/2	120
03	MOLLA (SPRING) 10/90 bar (145/1305 PSI) max	12 bar/al giro (174 PSI/turn)	BSPP 1/4 BSPP 3/8 BSPP 1/2 1
	MOLLA (SPRING) 20/210 bar (290/3045 PSI) max	30 bar/al giro (435 PSI/turn)	BSPP 1/4 BSPP 3/8 BSPP 1/2 2
	MOLLA (SPRING) 70/350 bar (1015/5075 PSI) max	65 bar/al giro (943 PSI/turn)	BSPP 1/4 BSPP 3/8 BSPP 1/2 3

PERFORMANCES



DATI TECNICI / TECHNICAL DATA

Olio idraulico - Mineral oil	ISO 6743/4 (DIN 51524)
Viscosità olio - Oil viscosity	15-250 mm²/s (15 to 250 cSt)
Classe di contaminazione max con filtro Max contamination index with filter	ISO 4406:1999 Classe 19/17/14
Temperatura dell'olio - Oil temperature	-20°C +80°C -4°F +176°F
Temperatura ambiente - Environment temperature	-20°C +50°C -4°F +122°F
È indispensabile l'utilizzo di un filtro per proteggere la valvola (filtrazione consigliata 15 µm) It is necessary a filter use to protect the valve (advised filtration 15 µm)	



CARATTERISTICHE TECNICHE / TECHNICAL CHARACTERISTICS

TIPO TYPE	A	PORTATA MAX MAX FLOW l/min-USgpm	PRESSIONE MAX MAX PRESSURE bar-PSI	B	C	D	E	G	L	N	H	P	PESO APPROX APPROX WEIGHT kg-lbt
VSL140	BSPP 1/4	20 (5.3)	350 (5075)	60 (2.36)	60 (0.98)	25 (0.98)	35.5 (1.40)	49 (1.93)	53 (2.09)	12 (0.47)	20 (0.79)	5.5 (0.22)	0,72 (1.58)
VSL380	BSPP 3/8	40 (10.6)											70 (2.76)
VSL120	BSPP 1/2			70 (2.76)	35 (1.38)	35 (1.38)	58 (2.28)	43 (1.69)	17 (0.67)	17 (0.67)	6.5 (0.26)	1 (2.21)	