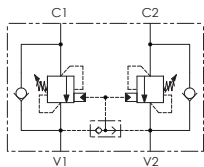
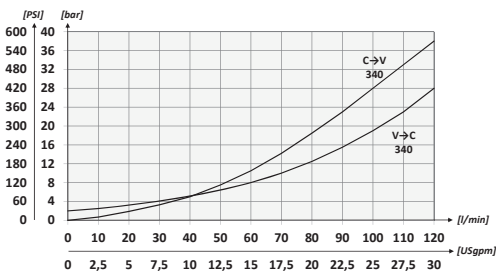
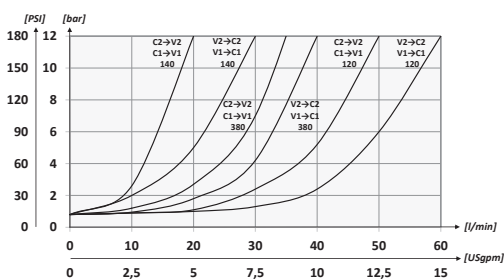


SCHEMA IDRAULICO / HYDRAULIC CIRCUIT



PERFORMANCES



CODICE ORDINAZIONE / ORDERING CODE

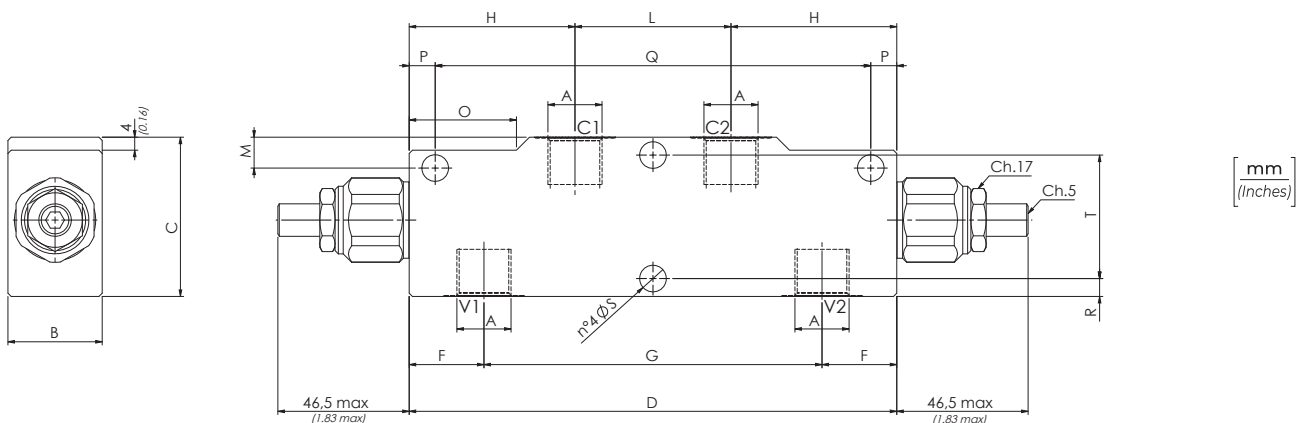
01	02	03	04	05
VBCD				

01	VALVOLE DI BILANCIAMENTO DOPPIE PER CENTRO APERTO (DOUBLE COUNTERBALANCE VALVES FOR OPEN CENTER)				VBCD	
02	DIMENSIONE (SIZE)	BSPP 1/4		140	1	
		BSPP 3/8		380		
		BSPP 1/2		120		
		BSPP 3/4		340		
03	MOLLA (SPRING) 30/210 bar (435/3045 PSI)	Rp 1:4.25	140	78 bar/al giro (1131 PSI/turn)	Taratura standard (Std. setting)	2
		Rp 1:8.75	120	160 bar/al giro (2320 PSI/turn)	Q=5 l/min 200 bar (2900 PSI)	
	MOLLA (SPRING) 60/350 bar (870/5075 PSI)	Rp 1:4.25	140	135 bar/al giro (1958 PSI/turn)	Taratura standard (Std. setting)	
		Rp 1:8.75	120	160 bar/al giro (2320 PSI/turn)	Q=5 l/min 350 bar (5075 PSI)	
	MOLLA (SPRING) 60/350 bar (870/5075 PSI)	Rp 1:6.2	340	143 bar/al giro (2074 PSI/turn)	Taratura standard (Std. setting)	
		Rp 1:10.6		242bar/al giro (3509 PSI/turn)	Q=5 l/min 350 bar (5075 PSI)	
04	MATERIALE (MATERIAL)	Acciaio + zincatura (Steel + zinc-plating)			S	
		Acciaio + zinco-nichel (Steel + zinc-nickel)			K	
05	RAPPORTO DI PILOTAGGIO (PILOT RATIO)	140	1:4.25 Standard		/	
		380	1:8.75		8	
		120	1:6.2		/	
		340	1:10,6		11	

Opzione: Tappo piombatura - Optional: Tamper proof cap **81300095**

DATI TECNICI / TECHNICAL DATA

Olio idraulico - Mineral oil	ISO 6743/4 (DIN 51524)
Viscosità olio - Oil viscosity	15-250 mm²/s (15 to 250 cSt)
Classe di contaminazione max Max contamination index	ISO 4406:1999 Classe 19/17/14
Temperatura dell'olio - Oil temperature	-20°C +80°C -4°F +176°F
Temperatura ambiente - Environment temperature	-20°C +50°C -4°F +122°F
È indispensabile l'utilizzo di un filtro per proteggere la valvola (filtrazione consigliata 15 µm) It is necessary a filter use to protect the valve (advised filtration 15 µm)	



CARATTERISTICHE TECNICHE / TECHNICAL CHARACTERISTICS

TIPO TYPE	A	PORTATA MAX MAX FLOW l/min-USgpm	PRESSIONE MAX MAX PRESSURE bar-PSI	B	C	D	F	G	H	L	M	O	P	Q	R	S	T	Peso Approx Approx weight kg-lbt									
VBCD140	BSPP 1/4	30 (7.9)	350 (5075)	29 (1.14)	49 (1.93)	150 (5.91)	23 (0.91)	104 (4.09)	51 (2.01)	48 (1.89)	10 (0.39)	33 (1.30)	8 (0.31)	134 (5.28)	5,5 (0.22)	8,2 (0.32)	38 (1.50)	1,57 (3,46)									
VBCD380	BSPP 3/8	40 (10.6)			59 (2.32)		21 (0.83)	108 (4.25)							12 (0.47)		7,5 (0.29)	43 (1.69)	1,55 (3,41)								
VBCD120	BSPP 1/2	60 (15.9)			39 (1.54)		69 (2.72)	210 (8.27)							26 (1.02)		158 (6.22)	72 (2.83)	66 (2.6)	13 (0.51)	45 (1.77)	10 (0.39)	190 (7.48)	8,5 (0.33)	10,5 (0.41)	52 (2.05)	1,78 (3,92)
VBCD340	BSPP 3/4	120 (31.7)			39 (1.54)		69 (2.72)	210 (8.27)							26 (1.02)		158 (6.22)	72 (2.83)	66 (2.6)	13 (0.51)	45 (1.77)	10 (0.39)	190 (7.48)	8,5 (0.33)	10,5 (0.41)	52 (2.05)	4,5 (8,81)