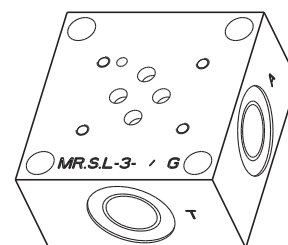
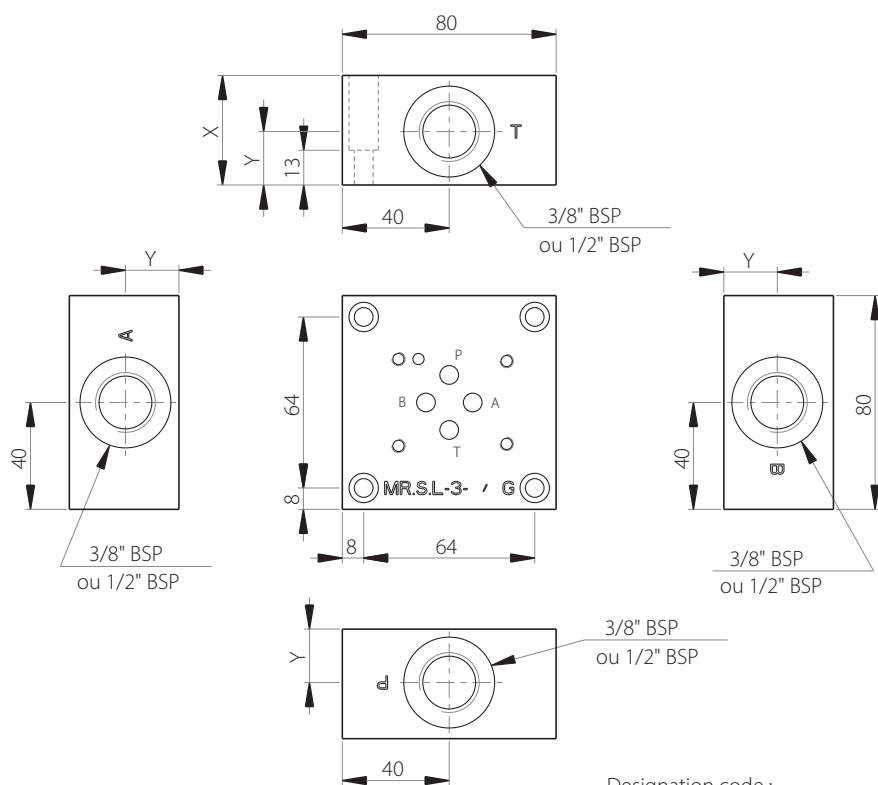
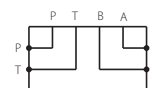


MRSL3

Side ports subplate
CETOP 3 / NG6



Ports	X	Y	(kg)
3/8"	35	17	1.40
1/2"	41	20	1.56



Technical specifications	
Material	Steel-Phosphating
Pressure	350 bar max
Flow rate	60 L/min max (3/8" BSP) 80 L/min max (1/2" BSP)

Designation code :

MR . S . L - 3 - * G

