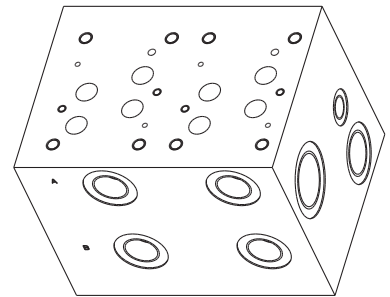
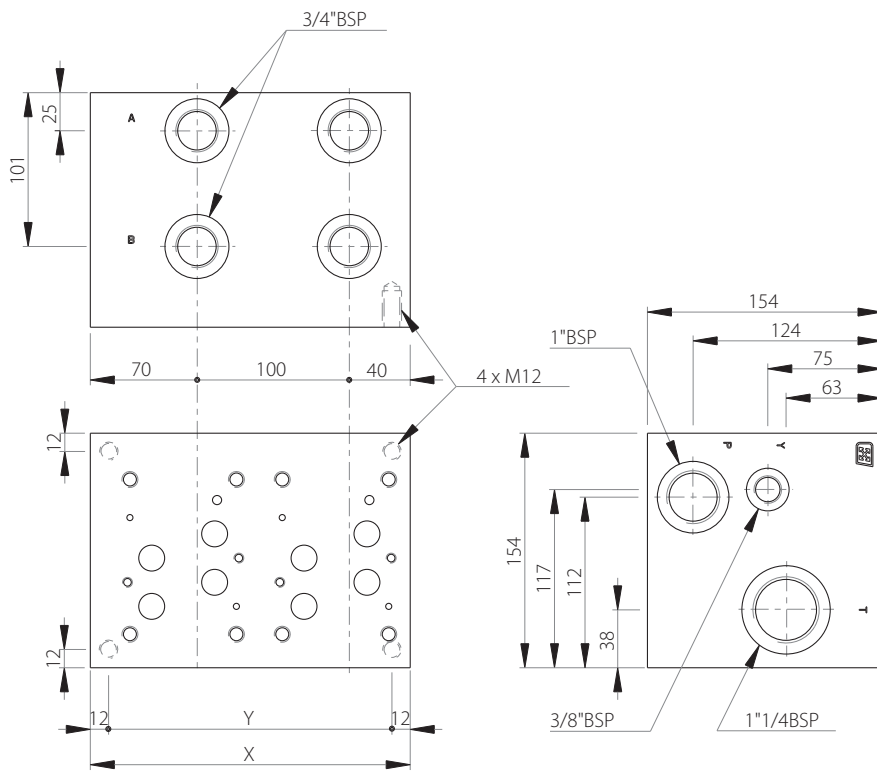
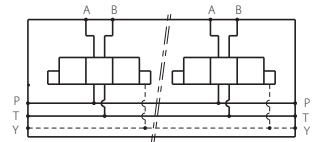


MR7- 3/4"

Side ports manifold with 3/4" ports
CETOP 7 / NG16



Stations	X	Y	(kg)
1	110	86	16
2	210	186	30



Technical specifications	
Material	Steel-Phosphating
Pressure	300 bar max
Flow rate	220 L/min max

Designation code :

MR - 7 - * - 3/4" G

