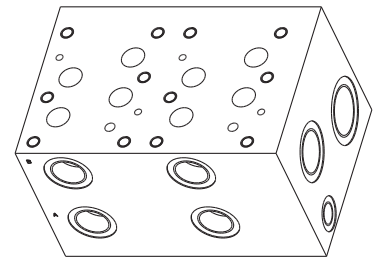
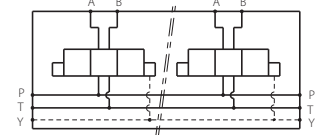


## MR8- 1"

Side ports manifold with 1" ports  
CETOP 8 / NG25



Stations	X	Y	(kg)
1	140	116	23
2	265	241	43



### Technical specifications

Material	Steel-Phosphating
Pressure	300 bar max
Flow rate	350 L/min max

Designation code :

MR - 8 - \* - 1" G

MECABOR

CETOP 8  
side ports

Station number

G : ports BSP

Ports