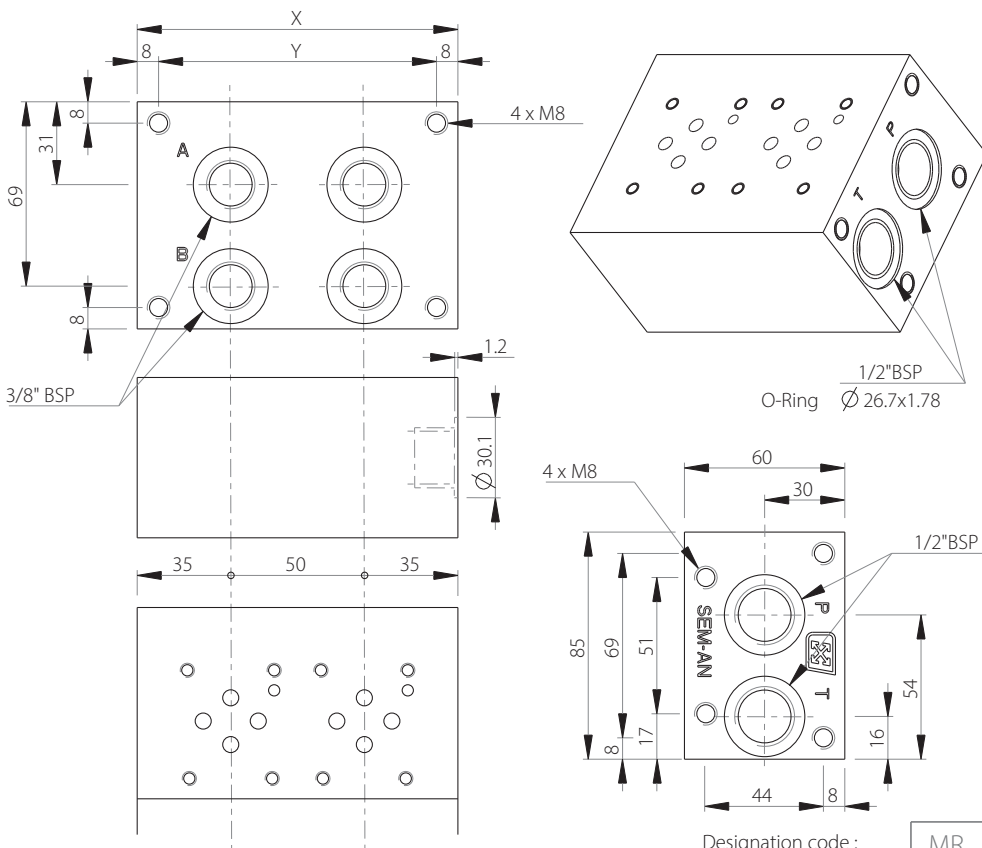
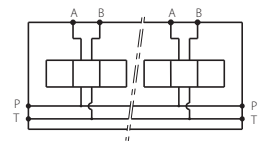


# MRK3

Bottom ports manifold  
CETOP 3 / NG6



Stations	X	Y	(kg)
1	70	54	2.35
2	120	104	3.90
3	170	154	5.45
4	220	204	7.00
5	270	254	8.55
6	320	304	10.10
7	370	354	11.65
8	420	404	13.20



Technical specifications	
Material	Steel-Phosphating
Pressure	300 bar max
Flow rate	50 L/min max

Designation code : **MR . K - 3 - \* . G**

MECABOR ————  
 Bottom ports ————  
 CETOP 3 ————

G : ports BSP  
 Station number