



3/2 WAY DIRECTIONAL VALVES KVC

- NG 4
- Up to 160 bar [2 320 PSI]
- Up to 16 L/min [4.2 GPM]
- Plug-in connector for solenoids to ISO 4400.
- Optimized flow paths for low losses of pressure.
- Wet pin solenoid with interchangeable coil.
- Manual emergency control.
- Protection of solenoid IP 65 to EN 60529 / IEC 60529.
- Fulfil EMC (89/336/EEC).
- Threaded connections to ISO 9974 (Metric), ISO 1179 (BSPP/Gas), ISO 11926 (UNF)



KVC2-3/2-4-47B, KVC-3/2-4-47B

Features

Hydraulic

Size		4
Flow rate	L/min [GPM]	16 [4.2]
Operating pressure	bar [PSI]	160 [2 320]
Viscosity range	mm ² /s [SUS]	15 to 380 [69.5 to 1760]
Oil temperature range	°C [°F]	-20 to +70 [-4 to 158]
Filtration	ISO 4406-1999	19/17/14
Mass	KVC-3/2-4	1,6 [3.5]
	KVC2-3/2-4	3,5 [7.7]

Electrical

Supply voltage	V	12, 24
Power	W	29 *
Switch-on time**	ms	50 to 80
Switch-off time**	ms	30 to 55
Switching frequency	1/h	15 000
Ambient temperature	°C [°F]	to 50 [122]
Coil temperature	°C [°F]	to 180 [356]
Duty cycle		Continuous

* 12 V supply voltage - 36 W.

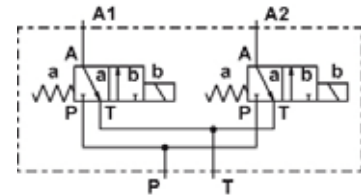
** The switching-on and off times apply to 24 V DC solenoids

Hydraulic symbol

Single: KVC-3/2-4-47B



Double: KVC2-3/2-4-47B



Mechanically operated

Hydraulically operated

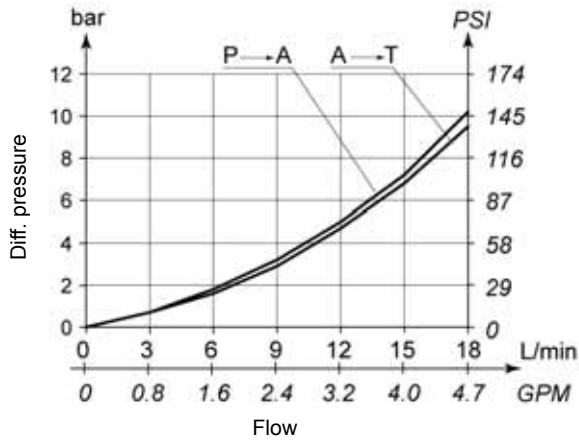
Electrically operated



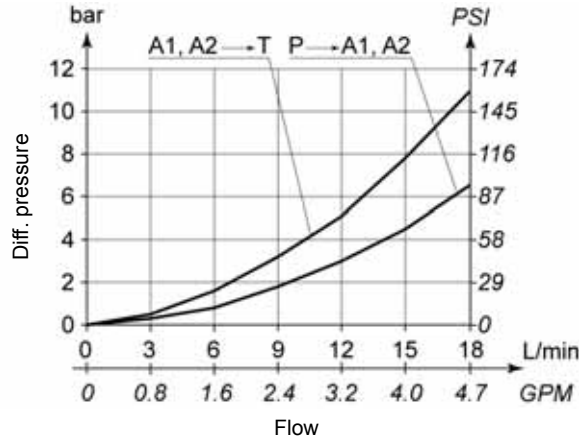
ΔP-Q Performance curves

Measured at 50°C [122°F] and viscosity of 32 mm²/s [148 SUS].

KVC-3/2-4

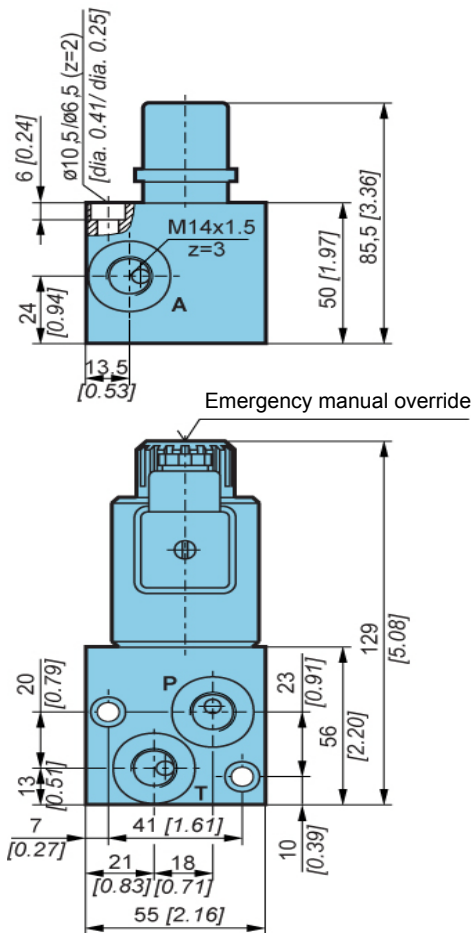


KVC2-3/2-4

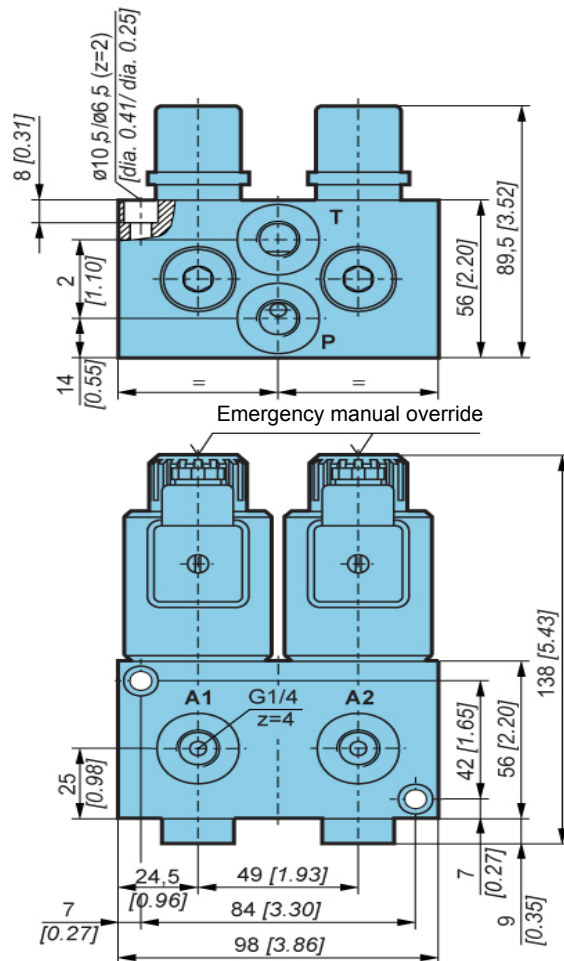


Dimensions

KVC-3/2-4-47B

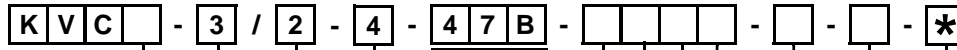


KVC2-3/2-4-47B





Model code



Hydraulic symbol

Simple	No designation
Double	2

Working ports

Three working ports	3
---------------------	---

Number of control spool position

Two positions	2
---------------	---

Size

Size	4
------	---

Spool type

Supply voltage

Direct voltage 24V	24 DC
Direct voltage 12V	12 DC

Connector type

EN 175301-803 without signal lamp	No designation
EN 175301-803 with signal lamp	L
EN 175301-803 without connector	K
AMP Junior timer without connector	M
Deutsch	V

Overvoltage

Without overvoltage protection	No designation
With overvoltage protection	T

Threaded connections A, B, P

M14x1,5; -	No designation
G1/4 ; -	1/4
9/16-18 UNF-2B ; 9/16-18 UNF-2B	SAE 6

Special requirements to be briefly specified

Seal type

No designation	NBR seals for mineral oil HL, HLP to DIN 51524
E	PM seals for HETG, HEES, HEPG to VDMA 24568 and ISO 15380

Manual override option

No designation	Emergency manual override
G	Manual override with rubber cover
C	Lockable manual override

Mechanically operated

Hydraulically operated

Electrically operated