

# 4DWG10型电磁换向阀

## 4DWG10 SERIES SOLENOID OPERATED DIRECTIONAL CONTROL VALVES



4DWG10 型方向控制阀是电磁操纵的换向阀，用以控制油液的开启、停止和换向。

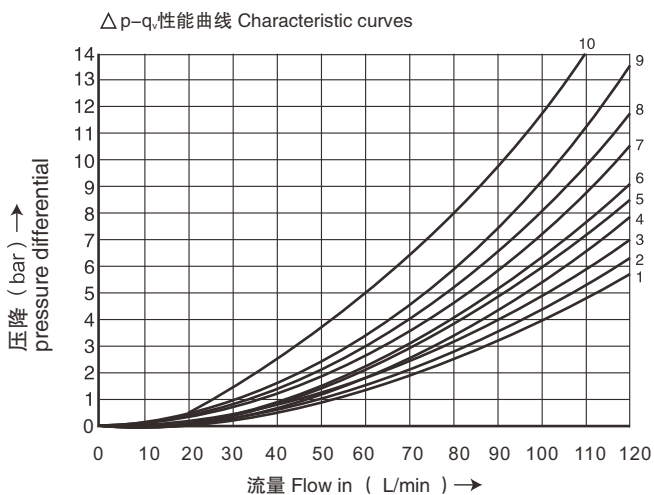
4DWG10 series directional control valves are solenoid operated directional spool valves, these valves are used to the start, stop and direct flow.

### ▶ 技术参数 Technical data

通径 Size		10
最大流量 (L/min) Max. flow rate (L/min)		120
工作压力 (MPa) Operating pressure (MPa)		A、B、P 油口 31.5 / A、B、P oil port 31.5 T 油口 16 / T oil port 16
重量 (千克) Weight (KGS)	单头 valve with one solenoid	4.6
	双头 valve with two solenoids	6
阀体 (材料) 表面处理 Valve body (Material) Surface treatment		铸件 表面磷化处理 casting phosphating surface
油液清洁度 / Oil cleanliness		NAS1638 9 级和 ISO4406 20/18/15 级 NAS1638 class 9 and ISO4406 class 20/18/15

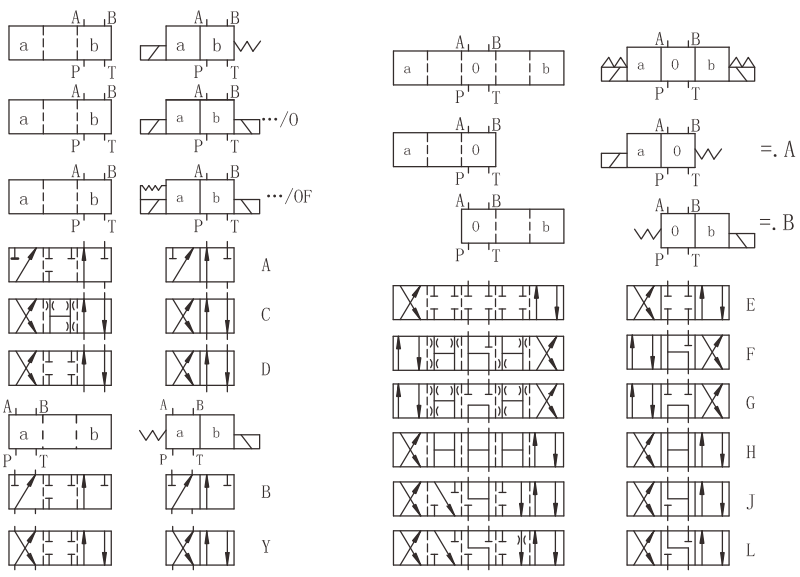
### ▶ 特性曲线 (在使用 HLP46, $\vartheta_{油}=40\text{ }^{\circ}\text{C} \pm 5\text{ }^{\circ}\text{C}$ 时测得)

Characteristic curves (measured with HLP46,  $\text{Voil}=40\text{ }^{\circ}\text{C} \pm 5\text{ }^{\circ}\text{C}$ )



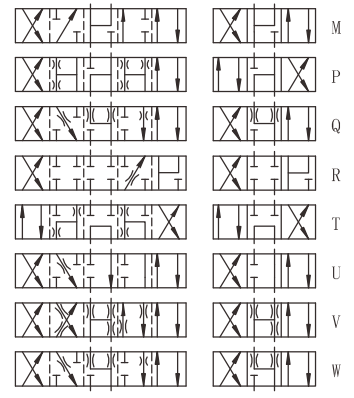
机能符号 Spool symbol	流向 Flow direction				
	P-A	P-B	A-T	B-T	
A; B	3	3	-	-	
C	3	3	4	5	
D; Y	5	5	6	6	
E	1	1	4	4	
F	2	3	7	4	
G	3	3	6	7	
H	1	1	6	7	
J	1	1	3	3	
L	2	2	3	5	
M	1	1	4	5	
P	4	2	5	7	
Q	1	2	1	3	
R	3	6	4	-	
T	3	3	6	7	
U, V	2	2	3	3	
W	2	2	4	5	
接通位置 on-position	P-A	B-A	A-T	P-T	
R	-	9	-	-	
	P-A	P-B	B-T	A-T	P-T
F	4	-	-	9	9
9	-	5	8	-	10
G, T			-	-	9
H			-	-	3

# 机能符号 Spool symbols

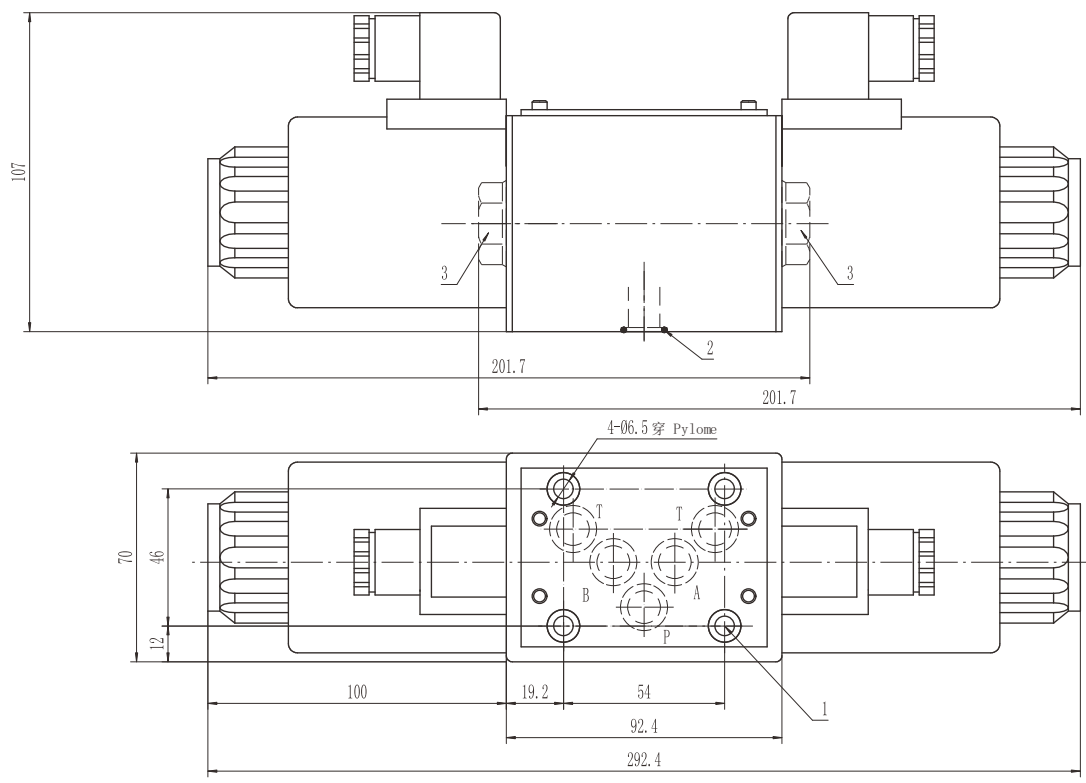


示例：阀芯E带阀芯位置“a”  
订货型号...EA...

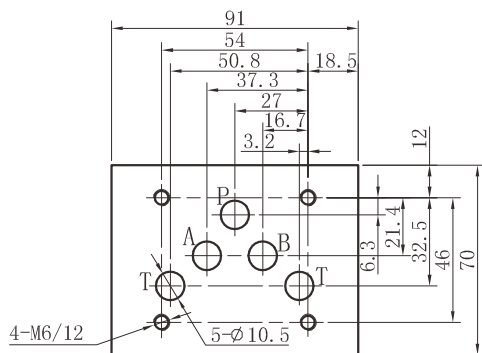
For example:  
the spool symbol "E" with position "a"  
Ordering code ...EA...



# DWG10 外型尺寸 DWG10 Overall Dimensions



- 1、阀固定螺丝：  
4个 M6X40GB/T70.1-12.9 级  
拧紧扭矩 Ma=15.5Nm
  - 2、O型圈 φ 16X1.9
  - 3、用于 1 个电磁铁阀的堵头
- 1. Valve's set screw:  
4 of M6 × 40 GB/T70.1-12.9  
Tightening torque Ma=15.5Nm.
  - 2. O-ring φ 16 × 1.9
  - 3. Plug screw for valves with one solenoid.



Z1DS10,Z2DS10,Z2FDS10,ZPB10,  
ZPR10 安装尺寸相同  
Installations are the same with  
Z1DS10,Z2SD10,Z2FDS10,ZPB10,  
ZPR10

4	DWG	10	E	30 / *	DC24	N	Z5L / *	*	*
---	-----	----	---	--------	------	---	---------	---	---

3= 三油口  
4= 四油口  
3=3-way  
4=4-way

口径 10 Size 10

机能符号 Spool type

系列号 30=30 螺纹连接电磁铁  
Series 30=30 Solenoid coils with  
thread connection

O= 无复位弹簧 ; OF= 带定位器 ; 无 = 弹簧复位  
No code=With spring return; O=Without spring return  
OF=Without spring return with deten

电压 Voltage  
DC12;DC24 ;AC110;AC220

For further details 附加说明

无 = 丁晴橡胶 V= 氟橡胶  
No code=NBR seals  
V=FPM seals

无 = 无插装节流器  
P 口节流 B0.8= 节流孔径 0.8  
B10= 节流孔径 1.0; B12= 节流孔径 1.2  
No code=Without throttle insert  
P port with throttle insert  
B08= throttle  $\phi$  0.8mm  
B10= throttle  $\phi$  1.0mm  
B12= throttle  $\phi$  1.2mm

Z5L= 带灯大方形插头  
ER= 德意志插头  
Z5L= Large quadrate plug with light  
ER=Deutsch Connector

N= 有故障检查按钮  
N=With concealed manual override