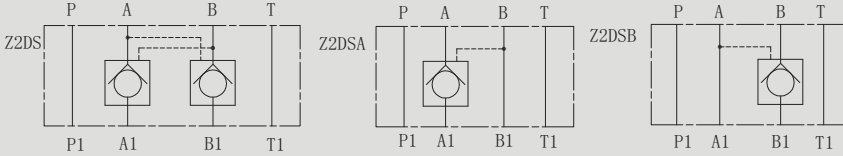


Z2DS10 型叠加式单向阀

Z2DS10 SERIES PILOT CONTROLLED MODULAR CHECK VALVES



符号 SYMBOL

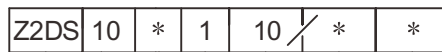


Z2DS10 型单向阀是叠加式液控单向阀，它可用于关闭一个或两个工作油口且无泄漏持续工作时间长，稳定性好。

Z2DS10 series are pilot operated style sandwich valves. These valves used to close one or two actuator ports.

▶ 技术参数 Technical data

通径 Size	10
工作压力 (MPa) Operating pressure (MPa)	31.5
流量 (L/min) Flow rate (L/min)	80
介质温度范围 (°C) Fluid temperature range (°C)	-30 ~ 80 °C
重量 (千克) Weight(KGS)	2.2
阀体 (材料) 表面处理 Valve body (Material) Surface treatment	铸件 表面磷化处理 casting phosphating surface
油液清洁度 /Oil cleanliness	NAS1638 9 级和 ISO4406 20/18/15 级 NAS1638 class 9 and ISO4406 class 20/18/15



型号 Model

通径:10
Size:10

无 = A, B口都有单向阀
A = A口带单向阀
B = B口带单向阀
No code=A,B ports with check valves
A=A port with check valve
B=B port with check valve

附加说明
For further details

无 = 丁晴橡胶
V= 氟橡胶

No code =NBR seals
V=FPM seals

系列号 10 = 10 通径
Series number 10=Size 10

开启压力 1 = 0.1MPa
Cracking pressure 1 = 0.1Mpa

