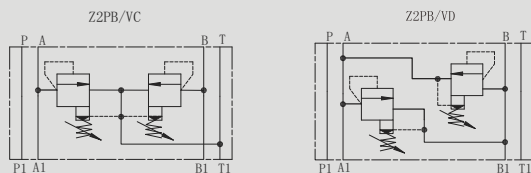
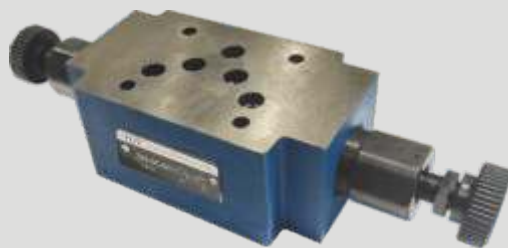


Z2PB10 SERIES MODULAR RELIEF VALVES

符号 SYMBOL



Z2PB10 型压力控制阀是叠加板结构的先导式溢流阀。

Pressure relief valves of Z2PB10 series are pilot operated style modular valves.

▶ 技术参数 Technical data

通径 Size	10
工作压力 (MPa) Operating pressure (MPa)	31.5
流量 (L/min) Flow rate (L/min)	100
油温范围 (°C) Oil temperature range (°C)	-20 ~ 70
重量 (千克) Weight (KGS)	Z2PB 3.1
阀体 (材料) 表面处理 Valve body (Material) Surface treatment	铸件 表面磷化处理 casting phosphating surface
油液清洁度 /Oil cleanliness	NAS1638 9 级和 ISO4406 20/18/15 级 NAS1638 class 9 and ISO4406 class 20/18/15



叠加式
Modular type

2=双溢流阀(只有 VC,VD)
2=Two relief cartridges
(Only for VC,VD)

型号
Model

通径:10
Size: 10

溢流方向 Relief from
VC:A→T B→T
VD:A→B B→A

附加说明
For further details

无 = 丁腈橡胶
V = 氟橡胶

No code=NBR seals for petroleum oils
V=FPM seals for phosphate ester

Pressure range 压力等级

50 = 5Mpa

100 = 10Mpa

200 = 20Mpa

315 = 31.5Mpa

系列号

Series number

1=手柄

1 = handwheel

Z2PB10VC VD 外形尺寸和安装 Z2PB10VC VD External Dimensions and Fittings

