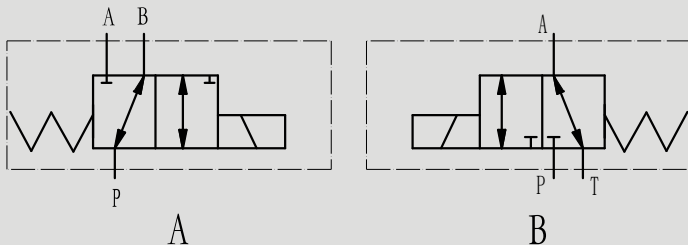


# HVC6系列 二位三通电磁换向阀

## HVC6 SERIES DIRECTIONAL VALVES LINE MOUNTING

### 符号 SYMBOL



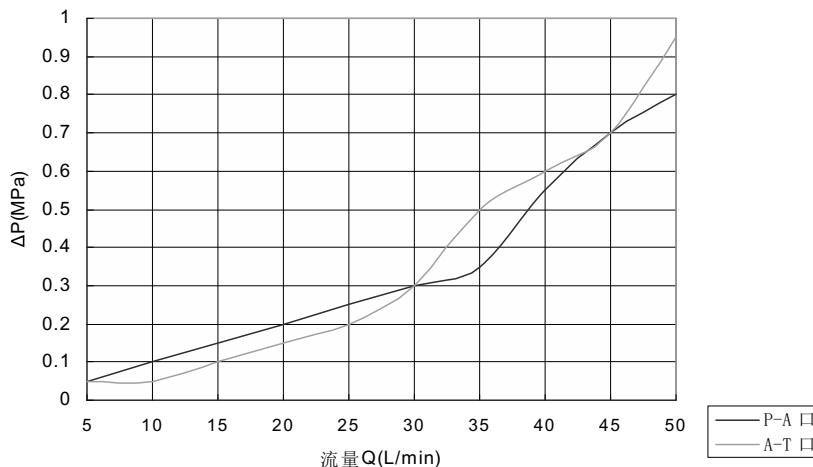
### ▶ 技术参数 Technical data

型号 Model	HVC6
最大流量 ( L/min ) Max Flow rate ( L/min )	50
最大工作压力 (Mpa) Max operating pressure(MPa)	25
阀体 ( 材料 ) 表面处理 Valve body ( Material ) Surface treatment	( 铸件 ) 表面磷化处理 / ( casting ) phosphating surface
油液清洁度 Oil cleanliness	NAS1638 9 级和 ISO4406 20/18/15 级 NAS1638 class 9 and ISO4406 class 20/18/15

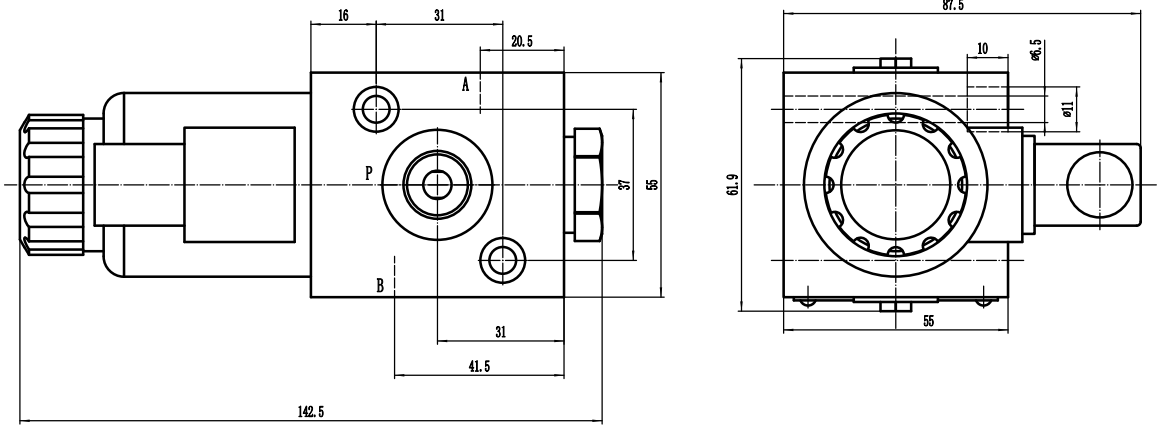
### ▶ 特性曲线 ( 在使用 HLP46 , $t_{油}=40\text{ }^{\circ}\text{C} \pm 5\text{ }^{\circ}\text{C}$ 时测得 )

Characteristic curves ( measured with HLP46 ,  $V_{oil}=40\text{ }^{\circ}\text{C} \pm 5\text{ }^{\circ}\text{C}$  )

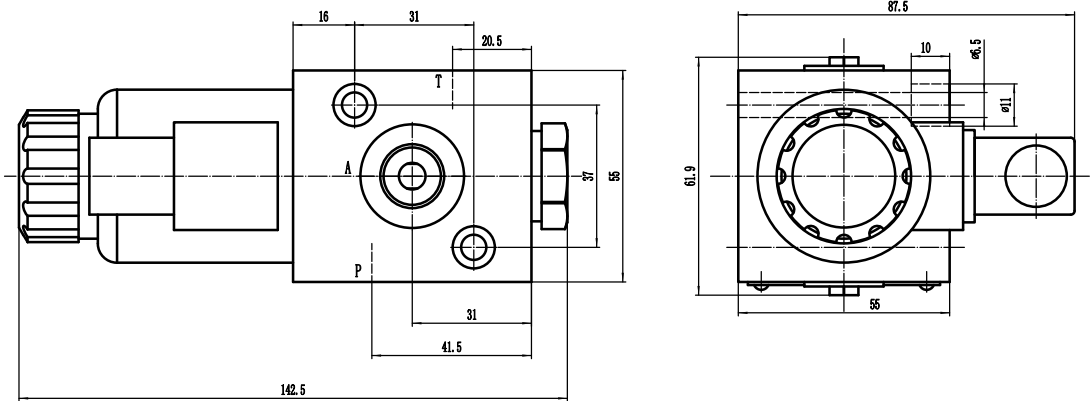
流量-压力损失曲线



HVC6A



HVC6B



HVC6	A	*	*	Z5L	*
------	---	---	---	-----	---

型号  
Model

机能符号:  
A型 B型  
Spool symbols:  
Type A Type B

螺纹连接 Threaded connection  
G 3/8 SAE 8

附加说明  
For further details

Z5L= 带灯大方形插头  
Z5L=Large quadrate plug with light

电压 Voltage DC12;DC24