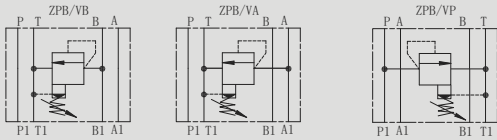


ZPB6型叠加式溢流阀

ZPB6 SERIES MODULAR RELIEF VALVES

符号 SYMBOL

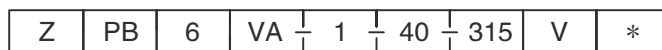


ZPB 型压力控制阀是叠加板结构的先导式溢流阀。

Pressure relief valves of ZPB series are pilot operated style modular valves.

▶ 技术参数 Technical data

通径 Size		6
工作压力 (MPa) Operating pressure (MPa)		31.5
流量 (L/min) Flow rate (L/min)		60
油温范围 (°C) Oil temperature range(°C)		-20 ~ 70
重量 (千克) Weight(KGS)	ZPB	1.3
阀体 (材料) 表面处理 Valve body (Material) Surface treatment		铸件 表面磷化处理 casting phosphating surface
油液清洁度 /Oil cleanliness		NAS1638 9 级和 ISO4406 20/18/15 级 NAS1638 class 9 and ISO4406 class 20/18/15



叠加式
Modular type

型号
Model

通径:6
Size:6

溢流方向 Relief from
VA:A→T
VB:B→T
VP:P→T

附加说明
For further details

无 = 丁晴橡胶
V= 氟橡胶
No code = NBR seals for petroleum oils
V=FPM seals for phosphate ester

Pressure range 压力等级
50 = 5Mpa
100 = 10Mpa
200 = 20Mpa
315 = 31.5Mpa

系列号
Series number
1=手柄
1= handwheel

