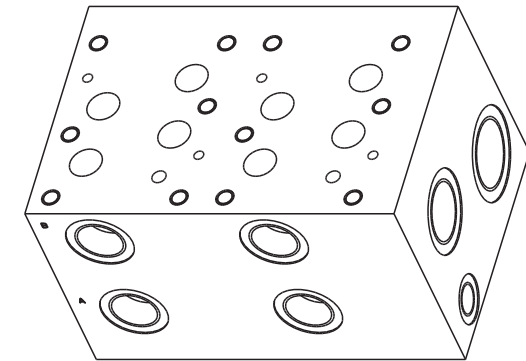
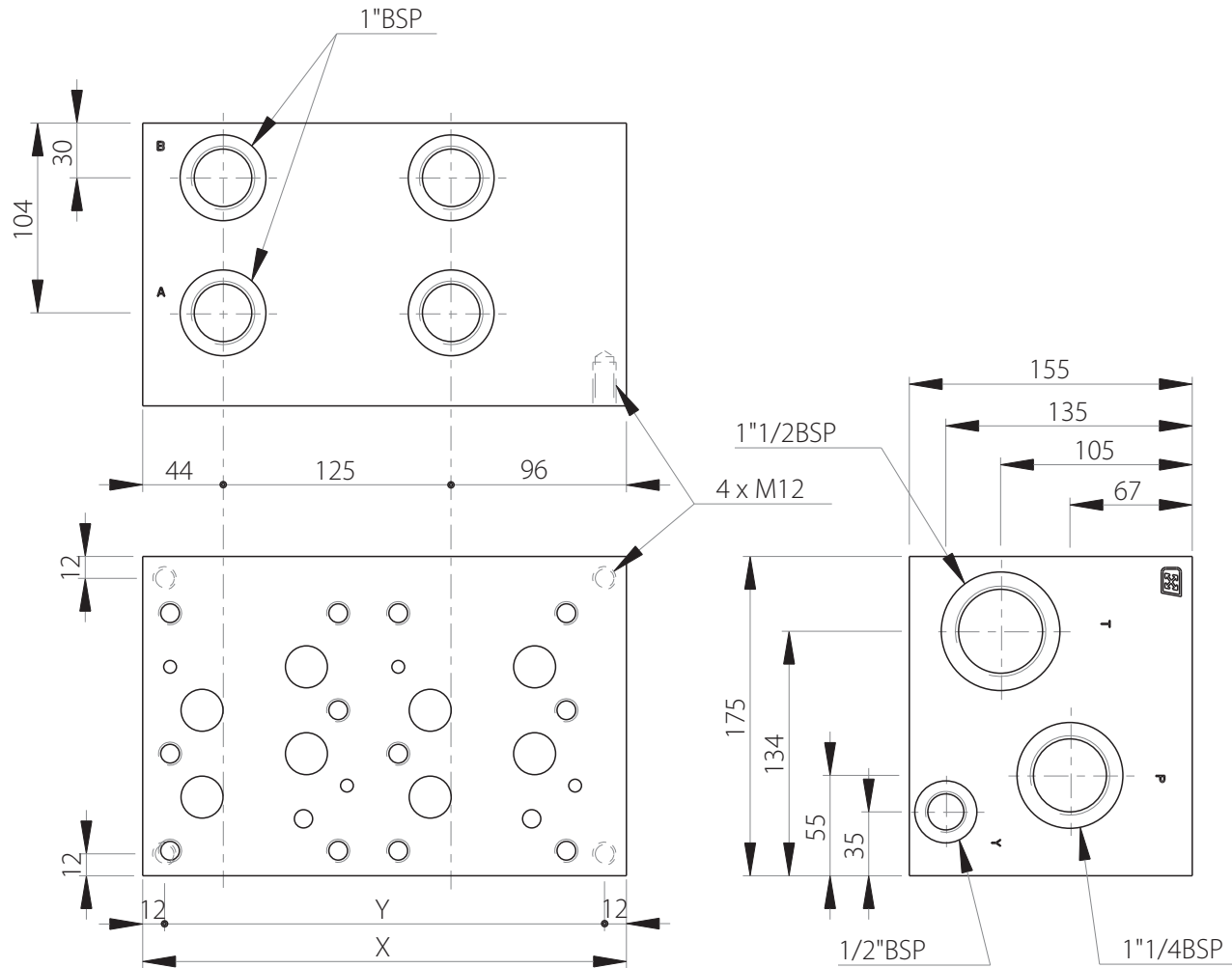
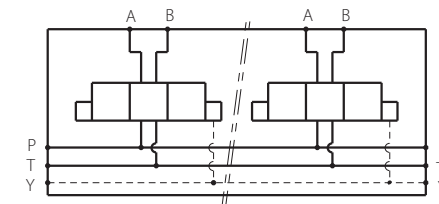


MR8- 1"

Side ports manifold with 1" ports
CETOP 8 / NG25



Stations	X	Y	(kg)
1	140	116	23
2	265	241	43



Technical specifications	
Material	GGG250
Surface treatment	Protalloy - Zinc-Nickel Electroplating
Pressure	300 bar max
Flow rate	350 L/min max

